



Model(s)_Z5535-K

EcoVantage® High Efficiency, 1.28 GPF, STD Height, Elongated, Siphon Jet Toilet

TAG

Architectural/Engineering Specification:

Vitreous China, high efficiency, 1.28 gpf [4.8 Lpf] low consumption, high performance siphon-jet toilet with 3" flush valve, elongated front rim and 12" standard rough-in.

PRODUCT FEATURES:

- 1.28 gpf (gallons per flush)
- High efficiency toilets (HET) reduces potable water usage over 20%
- Vitreous china
- 3" Flush valve for powerful flushing with EcoVantage® siphon-jet design
- Elongated front rim, chrome plated handle, and
- 2 1/2" Trap seal with 2 1/8" Fully glazed trapway
- Chloramine resistant internal components
- Heavy-duty stabilizers for rigid tank to bowl connection
- Concealed sanitary bar
- Large 10" x 8" water surface
- Includes bolt caps
- Shipping weight: 89 lbs



Product Compliance: ASME A112.19.2/CSA B45.1
CEC
CSA B45.1
WaterSense

SUFFIX OPTIONS:

-IN	Insulated tank
-RH	Vitreous China right-hand lever tank

Recommended Trim:

Z5958SS-EL	Elongated, white, closed front toilet seat with cover and stainless steel check hinge
Z5972-COMB	Closet bolt and wax ring kit
Z8800-XL-CR-PC	Standard stop with flexible closet riser

Optional Trim:

Z5975-FLO-JR	PVC Flo-Bowl Jr. closet flange kit
--------------	------------------------------------



*This product should be used with a WaterSense labeled counterpart with a compatible flow volume to ensure that the entire system meets the requirements for water efficiency and performance.

**Although products with certain combinations of options and features will meet or comply with these standards and/or certifications, not every combination of options and features will result in such compliance. If you have any questions about your particular product, please contact our Customer Care Dept. at 1-855-ONE-ZURN (United States) or 1-877-892-5216 (Canada) for confirmation.*

[Installation Guide - CBF10.pdf](#)

Architectural/Engineering Approval

Design and dimensional data (inches and [mm]) are subject to manufacturing tolerances and change without notice.

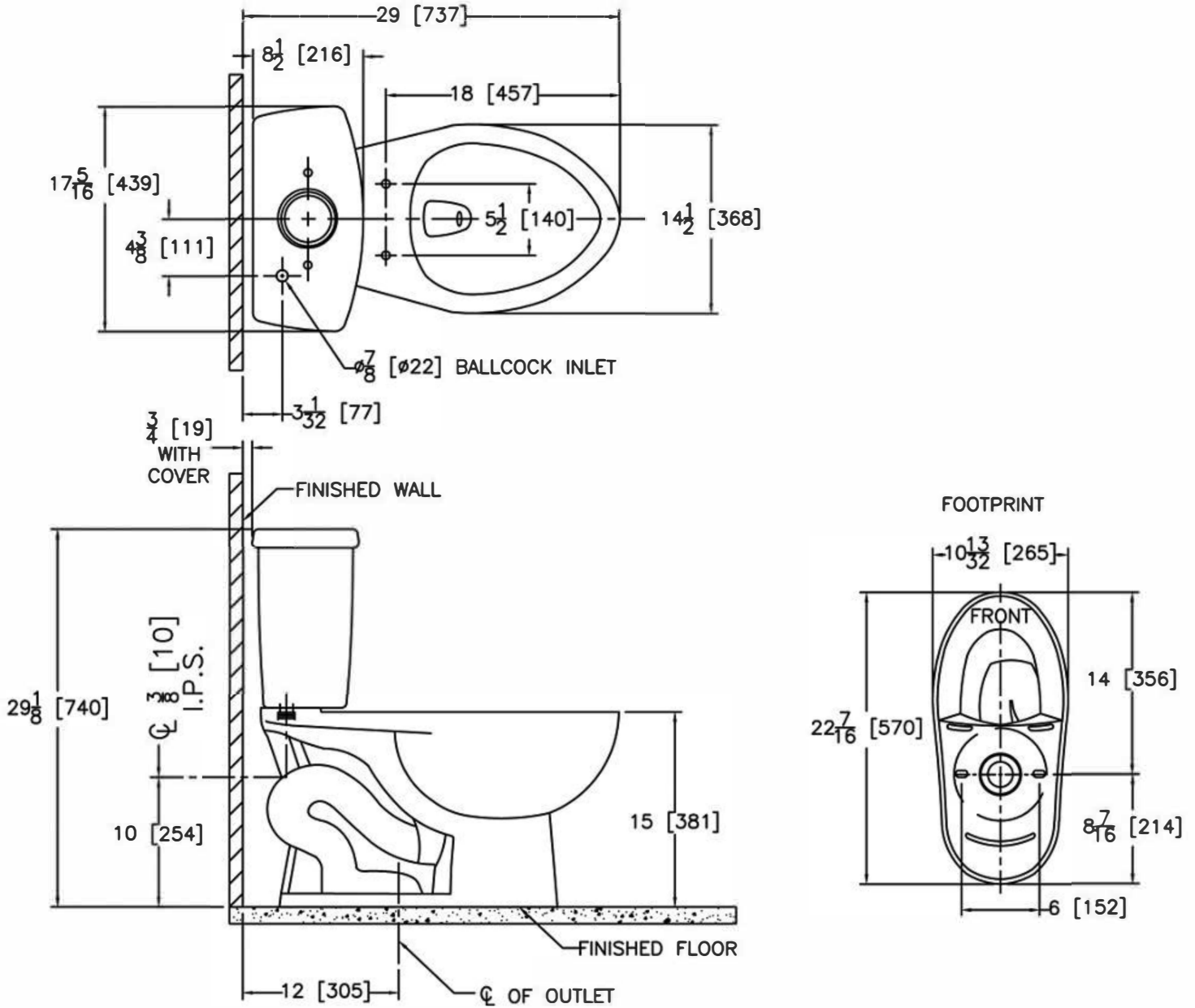
⚠ WARNING: Cancer and Reproductive Harm - www.P65warnings.ca.gov
⚠ ADVERTENCIA: Cáncer y daño reproductivo - www.P65warnings.ca.gov
⚠ AVERTISSEMENT: Cancer et effets néfastes sur la reproduction - www.P65warnings.ca.gov



Model(s)_Z5535-K

EcoVantage® High Efficiency, 1.28 GPF, STD Height, Elongated, Siphon Jet Toilet

TAG



NOTE: All dimensions are for reference only. Do not use for pre-plumbing.

Design and dimensional data (inches and [mm]) are subject to manufacturing tolerances and change without notice.

⚠ WARNING: Cancer and Reproductive Harm - www.P65warnings.ca.gov
 ⚠ ADVERTENCIA: Cáncer y daño reproductivo - www.P65warnings.ca.gov
 ⚠ AVERTISSEMENT: Cancer et effets néfastes sur la reproduction - www.P65warnings.ca.gov